

TAHSİS TALEP KROKİSİ

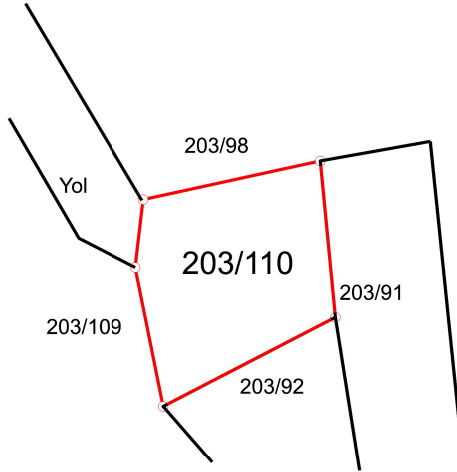
İL : Muğla
İLÇE : Menteşe
MAHALLE : Dokuzçam
ADA/PARSEL : 203/110
YÜZÖLÇÜMÜ : 143.42 m²
NİTELİK : Su Kaynağı



1/500

4141250 —
367050

4141250 —
367100



4141200 —
367050

4141200 —
367100

