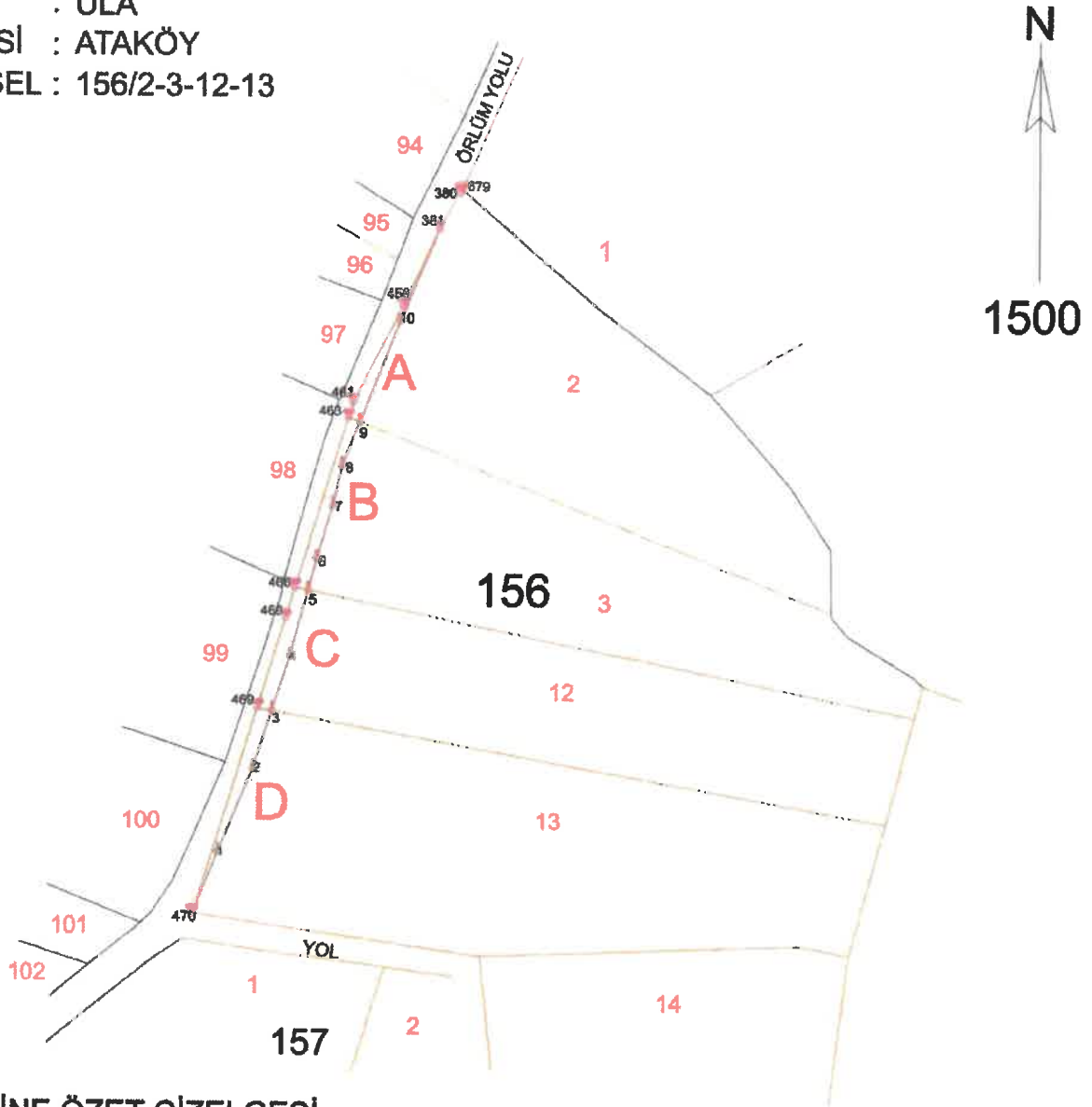


13.06.2024 Tarihli ve 159 sayılı Meclis Kararı Ekidir.

İLİ : MUĞLA  
İLÇESİ : ULA  
MAHALLESİ : ATAKÖY  
ADA/PARSEL : 156/2-3-12-13

## KROKİ



### KOORDİNE ÖZET ÇİZELGESİ ITRF\_96 27/3 DERECE

Nokta No	Y	X
1	623962.32	4101796.17
2	623970.37	4101815.42
3	623974.80	4101829.04
4	623978.92	4101841.74
5	623983.09	4101857.12
6	623985.07	4101864.41
7	623988.73	4101876.56
8	623990.88	4101885.89
9	623995.02	4101896.01
10	624004.17	4101919.87
380	624017.91	4101949.39
381	624013.18	4101940.99
458	624004.76	4101923.12
461	623983.43	4101900.74
463	623982.31	4101897.10
466	623980.12	4101857.74
468	623977.93	4101850.65
469	623971.43	4101829.65
470	623956.63	4101781.83
679	624018.42	4101850.01

Ada Parsel	Noktalar	Hesap Alan
KAMLUAŞTIRMA ALANI (A)	9,463,461,458,381,10	68.06
KAMLUAŞTIRMA ALANI (B)	5,466,463,9,8,7,6	105.42
KAMLUAŞTIRMA ALANI (C)	3,469,468,466,5,4	99.44
KAMLUAŞTIRMA ALANI (D)	470,469,3,2,1	101.40